

Community Newsletter

South Molton | March 2026

Hello Neighbour,

Building on February's momentum, activity on site continues to increase as we move through key structural works. This edition shares recent progress and works upcoming in March.

Thank you for your continued patience and support!

Site Progress

North and South Buildings

- The steelwork frame is now complete to Level 6.
- Concrete slabs are now progressing on Level 4, following the steelwork frame up the building.
- Temporary welfare works are progressing well on both the North and South buildings. With sufficient progress now achieved, site welfare facilities and the project team offices will be re-accommodated to the basements across both buildings.

50-54 Davies Street

- Works are continuing throughout the retained structure, with the final structural steel elements currently being installed.
- February saw continued progress on the roof refurbishment sequence, ensuring the building's historic character is preserved.

Planned works for March

North and South Buildings

- The steelwork frame will continue to be erected
- The Concrete slabs will be complete to on Level 4 in March and we will commence works on Level 5
- Construction of the hoist will continue, enabling materials to be transported to each level without relying on the cranes.

50-54 Davies Street

- March will see the continuation of the floor-strengthening works in the Running Horse Pub, alongside the commencement of the chimney-rebuild sequence, which is essential to maintain the building's historic character and ensure its long-term structural integrity.

IN THIS ISSUE

- Progress
- Planned Works
- Health, Safety & Wellbeing Insight
- Social Value
- Site Working Hours
- Key Contacts



North Building Progress



South Building Progress

Health, Safety & Wellbeing Insight

Safety is at the heart of everything we do, and our new monthly Workforce Engagement Briefings reflect that commitment. Each month, our leadership team brings together colleagues from across the project to openly discuss current health, safety, and environmental trends. These sessions create a space to share learning, highlight successes, and recognise individuals who go above and beyond to keep our workplace safe. By strengthening communication and involving every part of the team, we're building a culture where everyone plays an active role in ensuring **safety remains our highest priority**.



Paul Wright, Severfield Lifting Supervisor receiving safety recognition award from Skanska Construction Director, Charlie Smith



Students examining the model of the South Molton development

Social Value

February saw the team welcome 8 students to take part in a South Molton work experience programme. This included a day with Skanska, learning about the project and main contracting. Students also had the opportunity to explore the site, followed by placements with the wider project team - students visited Gardiner & Theobald (Project Management and Quantity Surveying), Twin & Earth (Sustainability), Hoare Lea (MEPH, Engineering), AKT II (Structural Engineering), Hopkins (Architecture). On the Friday, students came back together to present to Grosvenor and Skanska on their learning and to celebrate a successful week.

SITE WORKING HOURS

Monday – Friday	08:00 – 18:00
Saturday	08:00 – 18:00
Sunday	No works on site
Bank Holidays	No works on site
Noisy working hours	08:00 – 10:00
Monday – Friday	12:00 – 14:00
	16:00 – 18:00

HOW TO GET IN TOUCH

Should you have any queries or concerns regarding the project, please do not hesitate to get in touch.

Peter Walsh
Community Liaison
07767 858638
birchresources@gmail.com



Dermot O'Kelly
Construction Director
07748647768
dermot.okelly@skanska.co.uk



THANK YOU

At Skanska, we understand that construction work can be quite disruptive to the local community. We appreciate your patience and understanding, and we will continue to make every effort to minimise any inconvenience to you.

Insite

South Molton Street Community Newsletter

March 2026

Dear Neighbours

During February, we made progress across key areas of the site, and as we move into March, we remain focused on delivering the project safely, efficiently, and with continued enthusiasm.

Project Overview

We are currently delivering the refurbishment of 14 heritage buildings, 10 of which are listed. The scheme includes the creation of new retail, food & beverage, and restaurant spaces along South Molton Street and South Molton Lane, alongside both private and affordable residential accommodation.

The project also incorporates the construction of a new passageway connecting 10 South Molton Street to South Molton Lane, providing access to the wider South Molton scheme via Davies Mews.

What's been happening in February

February has been another busy month on site, with progress made in the following buildings. Here's a quick roundup:

- ▶ Roof works on 23 - 25.
- ▶ Progression of terrace extension builds on 20 - 23.
- ▶ Internal fit out in 15 - 22, 27 and 42.
- ▶ Repairs and restoration of heritage shopfronts on 15 -18, 20 and 21.
- ▶ New flooring being installed across 15 - 18.

What's planned for March

Looking ahead, here's what's coming up next month:

- ▶ Further propping and demolition works to 24 and 25.
- ▶ Roof works on 23 - 25, 27 & 42.
- ▶ Shopfront repairs and internal fit out to retail units 15 - 22
- ▶ New Decorative cornices being installed to apartments in 15 - 18
- ▶ New extensions and terraces are being formed on SML from 15 - 23.
- ▶ 4th floor extension build at 23.
- ▶ Underground drainage works in basements of 21 and 22.
- ▶ 1st fix of electrical and mechanical in 17-25 and 27.

Project highlight: 20 and 21 Extensions

We are reaching a key milestone this month, with construction of the new rear extensions at 20 and 21 progressing well. Brickwork to the first-floor terraces will be completed, alongside structural works that enable the formation of the second-floor terraces above.

Following this, waterproofing will be installed, allowing us to move into the next phase of the project and begin the internal fit-out of the apartments.

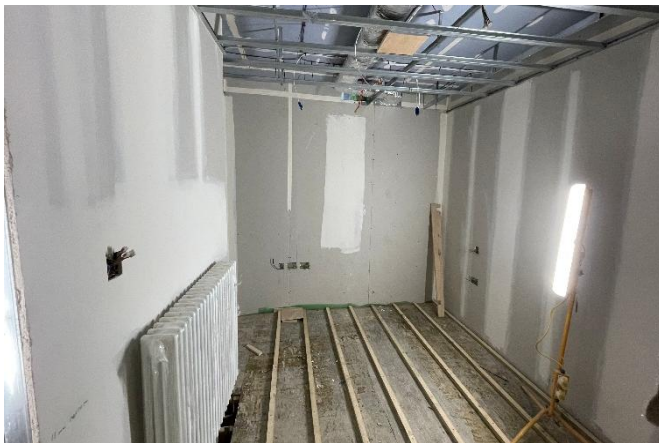


Picture of first-floor terraces at 20 & 21

Residential Fitouts

Throughout February, we continued to make strong progress with the internal fit-out of the apartments. Works have included floor levelling and the installation of new flooring, alongside ongoing mechanical and electrical first-fix installations.

In addition, new ceilings are being fitted, complete with decorative cornices, which have been carefully designed to match the existing heritage features on a like-for-like basis, preserving the character and integrity of the original building.



New room extension at rear of apartment 15A

South Molton Passage closure

We previously communicated that South Molton Passage would be closed for essential structural works.

Unfortunately, the passageway remains closed, and we sincerely apologise for this delay and any inconvenience it may cause.

A new reopening date will be communicated as soon as it is confirmed.

Safety remains our top priority, both for our site team and the wider community, so the closure will stay in place to ensure a safe and secure working environment throughout this phase. We appreciate you're understanding and apologise for any inconvenience caused.

Logistics Update

From 9th March, Curo will be using Davies Street North, outside Grays Antique, to temporarily service the project.

This change is required while essential utility works take place on South Molton Lane, restricting normal access. The alternative arrangement is expected to last around three weeks.

During this period:

- ▶ Deliveries will be scheduled and closely managed.
- ▶ A traffic marshal will be on site to maintain pedestrian safety.
- ▶ Loading activity will be kept to a minimum and managed to reduce disruption

Once the utility works are complete, servicing will return to the usual route, with access to South Molton Lane from Brook Street.

Thank you!

Curo know how their works can interfere with your day-to-day journeys. We would like to thank you all for your understanding so far and moving forward for the duration of the project. We will strive to reduce any disturbance the works may bring to you.

Get in touch

If you have any questions or complaints, please do not hesitate to contact us:



Joe Whyte

Senior Site Manager

E: Joewhyte@curoconstruction.com

P: 07446 046096



Stuart Thompson

Senior Site Manager

E: stuartthompson@curoconstruction.com

P: 07717 208846

Site opening hours

Site Working Hours:

Monday to Friday, 8am – 6pm

Saturday, 8am – 1pm

Noisy Working Hours:

8 – 10am, 12 – 2pm and 4 – 6pm daily

Sign up to the mailing list

These newsletters and other project updates are also sent digitally to the South Molton mailing list.

Sign up at bit.ly/SMTmailinglist or by scanning the QR code.

