

Community Newsletter

South Molton | December 2025

Hello Neighbour,

November marked significant progress on site, with the steelwork frame now reaching Level 3 on both buildings. We're nearing the completion of the basement works to prepare for the installation of mechanical, electrical, and plumbing services.

Site Progress

North and South Buildings

- Steelwork frame constructed to level 3 – nearing the halfway mark of the buildings finished height.
- The installation of the metal decking on the steel frame continues in a phased sequence – soon to be poured with concrete, enabling the next stages of construction.
- Blockwork walls are progressing quickly across both basement levels, which will enable new welfare facilities for the workforce.
- Concrete slabs are being installed at Level 1 inside the already completed cores, forming a solid base throughout the structure.

50-54 Davies Street

- The structural steel frame has now been installed, providing essential support to the existing structure.
- New concrete slabs have been poured at levels 1 and 2, tying the existing structure to the newly installed steel frame in the North Building
- The existing roof slates on the Running Horse Pub are being carefully removed, marking the beginning of the roof refurbishment works.

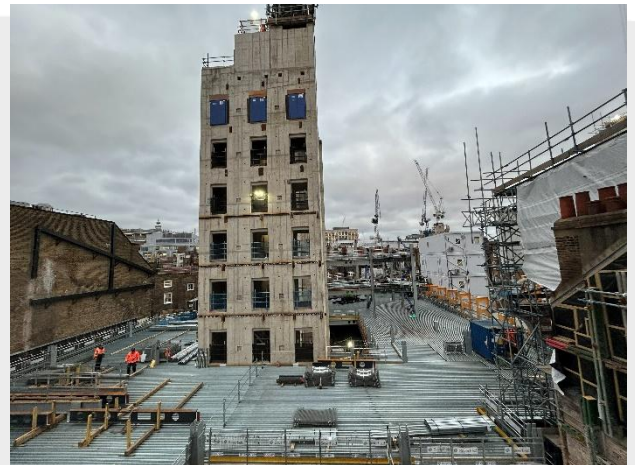
Planned works for December

North and South Buildings

- Steel frame installation will progress up to level 4
- Metal decking will follow the steel frame installation, creating safe working platforms as the structure rises.
- Blockwork in the basement will continue, forming the plant rooms, retail units and end-of-trip facilities.

IN THIS ISSUE

- Progress
- Planned Works
- Community Engagement
- First Aid in Action
- Site working hours
- Key contacts



North Block Steel Frame and Metal Deck Progress



South Block Steel Frame and Metal Deck Progress

Community Engagement

New Opportunities: In November, a local resident started with Lesterose, working towards an NVQ Level 3 in bricklaying—a great example of how the project supports skills development in the community.

Career Insights: Members of Skanska's finance team joined Westminster Adult Education Service (WAES) for a careers insight session, sharing their experience with accountancy trainees. WAES praised the session for inspiring learners and showcasing real career pathways.

Schools Programme Continuing our work with local schools, staff from AKT II, Grosvenor, and Skanska visited Year 2 pupils at St Mary's Bryanston Square for an engaging session on structural engineering, sparking early interest in the built environment.



Simone Colella, Associate Director AKT II introducing structural engineering to the students of St Mary's Bryanston Square

First Aid in Action: A Life Saving Response

Earlier this month, Works Manager Justin Stickels acted quickly when a vendor in a neighbouring retail business collapsed after a suspected heart attack. Using his first aid training, Justin placed the man in the recovery position and gathered vital medical information before paramedics arrived. The patient was taken to hospital and later recovered, with paramedics praising Justin's calm and decisive response.

This incident highlights the importance of Skanska's Injury-Free Environment (IFE) culture and compulsory training. IFE isn't just about preventing accidents on site—it's about empowering everyone to act safely and responsibly in any situation. Justin's actions show how these principles extend beyond construction, ensuring we're prepared to protect lives whenever needed.



SITE WORKING HOURS

Monday – Friday	08:00 – 18:00
Saturday	08:00 – 18:00
Sunday	No works on site
Bank Holidays	No works on site
Noisy working hours	08:00 – 10:00
Monday – Friday	12:00 – 14:00 16:00 – 18:00

HOW TO GET IN TOUCH

Should you have any queries or concerns regarding the project, please do not hesitate to get in touch.

Peter Walsh
Community Liaison
07767 858638
birchresources@gmail.com



Dermot O'Kelly
Construction Director
07748647768
dermot.okelly@skanska.co.uk



THANK YOU

At Skanska, we understand that construction work can be quite disruptive to the local community. We appreciate your patience and understanding, and we will continue to make every effort to minimise any inconvenience to you.

Insite

South Molton Street Community Newsletter

December 2025

Dear Neighbours,

In November, we made strong progress across the project, and as we move into December, we remain focused on continuing our work with a high level of safety, efficiency, and enthusiasm.

Project Overview

We are currently delivering the refurbishment of 14 heritage buildings, 10 of which are listed. The scheme includes the creation of new retail, food & beverage, and restaurant spaces along South Molton Street and South Molton Lane, alongside both private and affordable residential accommodation.

The project also incorporates the construction of a new passageway at 10 SMS, connecting South Molton Street to South Molton Lane and the wider South Molton scheme via Davies Mews.

What's been happening in November

November has been another busy month on site, with progress made in the following Buildings, Here's a quick roundup:

- ▶ Façade retention and propping removed from south Molton passageway.
- ▶ Roof repairs on 27.
- ▶ Internal fit out in 15 to 22.
- ▶ Repairs and restoration of heritage shopfronts on 15,16,17 and 21.
- ▶ New waterproofing and roofs to terraces on 15,16 and 18.

What's planned for December

Looking ahead, here's what's coming up next month:

- ▶ Further Propping and demolition works to 24 and 25.
- ▶ Shopfront repairs and internal fit out to retail units 15 to 20.
- ▶ New flooring being installed to apartments in 15 and 16.
- ▶ New extensions and terraces are being formed on SML from 15 to 22.
- ▶ Roof works on 24, 25, 27 and 42.
- ▶ 1st fix of Electrical and mechanical in 15 -25 and 27.

Project highlight: 16 Shopfront SML

In November, we successfully completed the installation of the new steel frame for the rear shopfront at 16 South Molton Lane. We have now progressed to fitting the new timber framing, with glass panels to follow shortly.

This is one of the largest shopfronts facing onto South Molton Lane, and it has achieved excellent progress over the past month.

This work forms part of our wider initiative to introduce activation along South Molton Lane, where previously there was none. As installation continues, the transformation of the streetscape is becoming increasingly visible and exciting.



16 SML Shopfront

Seasons Greetings

We would like to wish you all a very Merry Christmas and a Happy New Year from all of us at Curo.

Heritage Cornices in 15 and 16

In November, we began installing the decorative cornices in the first set of apartments within Buildings 15 and 16. These new cornices have been carefully crafted to replicate the original heritage features found throughout the South Molton Street properties.

To achieve an exact match, each cornice is created using a squeeze mould taken directly from the original profiles, ensuring all the intricate details are faithfully reproduced. This process is carried out for every cornice requiring repair or replacement in each apartment, preserving the historic character of the buildings while delivering high-quality restoration.



New Heritage cornice

Logistics

South Molton Passage closure

We previously communicated that South Molton Passage would be closed for essential structural works. Unfortunately, the passageway remains closed, and we sincerely apologise for this delay and any inconvenience it may cause.

A new reopening date will be communicated as soon as it is confirmed.

Safety remains our top priority, both for our site team and the wider community, so the closure will stay in place to ensure a safe and secure working environment throughout this phase. We appreciate you're understanding and apologise for any inconvenience caused.

Thank you!

Curo know how their works can interfere with your day-to-day journeys. We would like to thank you all for your understanding so far and moving forward for the duration of the project. We will strive to reduce any disturbance the works may bring to you.

Get in touch

If you have any questions or complaints, please do not hesitate to contact us:



Joe Whyte

Senior Site Manager

E: Joewhyte@curoconstruction.com

P: 07446 046096



Stuart Thompson

Senior Site Manager

E: stuartthompson@curoconstruction.com

P: 07717 208846

Site opening hours

Site Working Hours:

Monday to Friday, 8am – 6pm

Saturday, 8am – 1pm

Noisy Working Hours:

8 – 10am, 12 – 2pm and 4 – 6pm daily

Sign up to the mailing list

These newsletters and other project updates are also sent digitally to the South Molton mailing list.

Sign up at bit.ly/SMTmailinglist or by scanning the QR code.

