

## Community Newsletter

South Molton | October 2025

### Hello Neighbour,

As we move into October, our focus remains on maintaining momentum and building on the successes of Q3 as we enter the final quarter of the year.

We are excited to be reaching a major milestone in the project this month, with the commencement of the steel superstructure!

#### IN THIS ISSUE

- Progress
- Site working hours
- Planned works
- Tower Crane rescue training
- Community Engagement
- Key contacts

#### Site Progress

##### North and South Block

- Completion of Ground Floor Slabs
- New Tower Crane erected
- Dismantling of concrete core rig
- Basement lift concrete structures formed

##### 50-54 Davies Street

- Roof demolition in progress
- Brickwork repairs in progress
- Structural steel installed

#### Planned works for October

##### North and South Block

- Steelwork erection
- Mezzanine basement slab construction
- Basement waterproofing and screeding
- Brook Street Façade repairs
- Steelwork erection
- New Tower Crane erection for the South Block

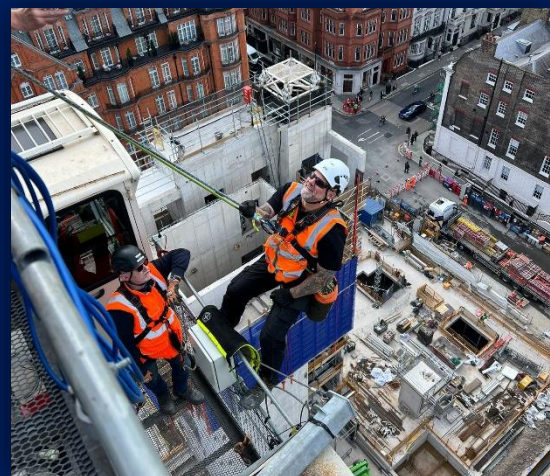
##### 50-54 Davies Street

- Completion of roof demolition
- Finish basement brickwork repairs
- Progress shopfront brickwork repairs

### Tower Crane Rescue Training

This month, members of the site team took part in tower crane rescue training, putting emergency procedures into practice high above the South Block.

The session combined hands-on drills with real-world scenarios, focusing on safe access, equipment handling and coordinated response. It was a great opportunity to sharpen skills, boost confidence and reinforce our commitment to safety at height.



## Considerate Constructor Success!

The project recently received a visit from the Considerate Constructors Scheme (CCS), and we are thrilled to report that we achieved the maximum score possible (45/45) —plus a bonus point for our collaborative work on improving safety around mobile elevating work platforms (MEWPs).

The CCS promotes best practices in construction, especially around community respect, safety, and environmental care, so this recognition is a proud moment for the whole team and a great reflection of our commitment to doing things the right way.

### HOW TO GET IN TOUCH

Should you have any queries or concerns regarding the project, please do not hesitate to get in touch.

#### Peter Walsh

Community Liaison  
07767 858638  
[birchresources@gmail.com](mailto:birchresources@gmail.com)



#### Dermot O’Kelly

Construction Director  
07748647768  
[dermot.okelly@skanska.co.uk](mailto:dermot.okelly@skanska.co.uk)



### SITE WORKING HOURS

<b>Monday – Friday</b>	08:00 – 18:00
<b>Saturday</b>	08:00 – 18:00
<b>Sunday</b>	No works on site
<b>Bank Holidays</b>	No works on site
<b>Noisy working hours</b>	08:00 – 10:00
<b>Monday – Friday</b>	12:00 – 14:00
	16:00 – 18:00

### THANK YOU

At Skanska, we understand that construction work can be quite disruptive to the local community. We appreciate your patience and understanding, and we will continue to make every effort to minimise any inconvenience to you.



Tower Crane Erection



Steel erection in the North Block



South Block core erection

# Insite

## South Molton Street Community Newsletter

October 2025

### Dear Neighbours

September has been a month of steady progress on site, and we're pleased with the momentum we've built. As we move into October, our focus remains on maintaining this pace while continuing to deliver the project safely, efficiently, and with enthusiasm.

### Project Overview

The project involves refurbishing 14 heritage buildings, including 10 listed properties. The works will deliver new retail, food & beverage, and both private and affordable residential spaces, along with a new pedestrian passageway connecting South Molton Street to South Molton Lane via Davies Mews.

### What's been happening in September

September has been yet again another busy month on site, with lots of progress made. Here's a quick roundup:

- ▶ Completed blockwork for micro retail units 19 and 20.
- ▶ Installed new steel supports on the roof of unit 20.
- ▶ Continued mechanical works in the plant room of unit 22.
- ▶ Built new walls and partitions in units 15–20.
- ▶ Started demolition and drainage works in unit 21.
- ▶ Progressed mechanical and electrical first fix in units 10, 15–18.

### What's planned for October

Looking ahead, here's what's coming up next month:

- ▶ Install structural steels in units 23 and 24.
- ▶ Complete roofing works on units 21 and 22.
- ▶ Begin extension works at 15 South Molton Lane.
- ▶ Continue roof works on the terrace of unit 18.
- ▶ Connect new Thames Water services for units 15–22.
- ▶ Continue drainage works and restore heritage fireplace in unit 21.

### Project highlight: 23/24 Demolition

A new phase of demolition works have started at units 23 and 24. This includes creating an opening in the party wall that spans from the first floor down to the basement. This opening will form part of the new retail unit at ground level of unit 24. At basement level, the floor will be raised to align with the new ground floor layout.

Looking ahead to October, the next phase of works will involve installing a steel frame to support the newly created opening. Following this, a second steel frame will be installed on the rear external wall of unit 23. Additional demolition works will also continue along the shared party wall between units 23 and 24.



23/24 Party wall demolition

## Thames Water

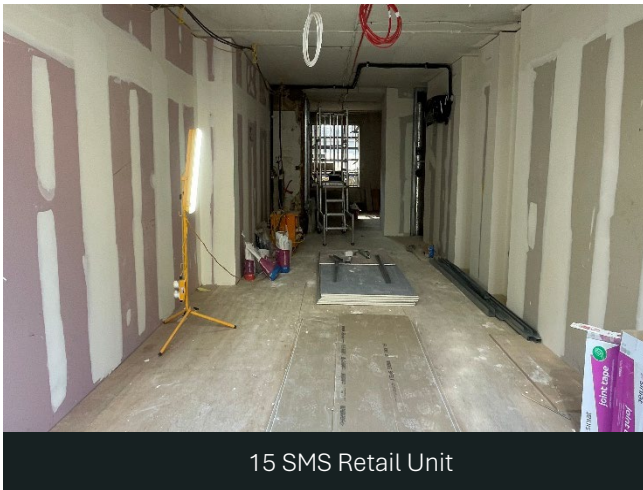
Thames Water will be disconnecting existing water supplies to units 15–22 between 27 October and 8 November. To carry out these works, excavation will take place on South Molton Street, just outside the Curo hoarding line.

A temporary road closure will be in place for the duration of the works. Pedestrian access will remain open, but please note that deliveries may be disrupted. Our logistics team will be on hand to assist with deliveries wherever possible.

Curo will advise when the disconnection to the remaining units (phase 2) will take place once confirmed by Thames Water. This will likely be in Q1 2026.

## Retail units 15 to 17

September saw exciting developments across retail units 15, 16, and 17 on South Molton Street. Mechanical and electrical services are now being installed, laying the groundwork for future fit-outs. Alongside this, new wall linings and partitions are being constructed, helping to shape the internal layout of these future retail spaces.



15 SMS Retail Unit

## Logistics

### South Molton Passage Closure:

**We are pleased to confirm that South Molton Passage will reopen for pedestrian access on 16<sup>th</sup> October.**

We appreciate your patience and understanding whilst this closure was in place to maintain a safe environment.

### Thank you!

Curo know how their works can interfere with your day-to-day journeys. We would like to thank you all for your understanding so far and moving forward for the duration of the project. We will strive to reduce any disturbance the works may bring to you.

### Get in touch

If you have any questions or complaints, please do not hesitate to contact us:



Joe Whyte

**Senior Site Manager**

E: [Joewhyte@curoconstruction.com](mailto:Joewhyte@curoconstruction.com)

P: 07446 046096



Stuart Thompson

**Senior Site Manager**

E: [stuartthompson@curoconstruction.com](mailto:stuartthompson@curoconstruction.com)

P: 07717 208846

## Site opening hours

### Site Working Hours:

Monday to Friday, 8am – 6pm

Saturday, 8am – 1pm

### Noisy Working Hours:

8 – 10am, 12 – 2pm and 4 – 6pm daily

## Sign up to the mailing list

These newsletters and other project updates are also sent digitally to the South Molton mailing list.

Sign up at [bit.ly/SMTmailinglist](https://bit.ly/SMTmailinglist) or by scanning the QR code.

