

## Community Newsletter

South Molton | February 2025

### Hello Neighbour,

We hope you have settled into 2025, and the New Year's resolutions are holding up!

Works on site continue in line with our programme and we have held "back to work" sessions across our workforce to ensure that moving forward, full consideration is shown to our neighbours.

### Progress So Far

- Commenced mini piling works to the North Block
- Completed underpinning to the retained façade and party walls around the North Block
- Continued demolition works to 1-8 Davies Mews
- Completed excavation to basement level -1 in the South Block
- Completed the first concrete pours to form the B1 raft slab within the South Block basement
- Commenced underpinning to 50-54 Davies Street
- Continued restoration works to the Running Horse Pub including the installation of a temporary scaffold protection

### Healthy Eating

We are also taking the opportunity to engage and support local businesses, partnering with Stampa on Davies Street to provide porridge to the workforce during the colder months.



### IN THIS ISSUE

- Progress so far
- Site working hours
- Planned works
- Environment Update
- Community Engagement
- Key contacts

### Planned works for this month

- Complete the remaining demolition works to 1-8 Davies Mews
- Complete the mini piling to the North building on Davies Street and South Molton Lane
- Commence excavation works to level -1 in the North Block
- Continue excavation works to level -2 in the South Block including the installation of temporary propping
- Continue restoration works to the Running Horse pub including the replacement of lintels and strengthening of the existing floors

### Environment Update

- All non-hazardous waste in December was diverted from landfill.
- Over the last 2 months we have sent some leftover timber to Wellgate Community Farm in Romford and Deen City Urban Farm in Merton for reuse.
- We are reusing stone on the façade and using reclaimed brickwork on the ground floor. This supports a Circular Economy.





## Community Engagement

The team will be supporting the Construction Youth Trust over the coming months, visiting local schools to promote careers within the industry and share employability tips with students. If you, or anyone in your network, is interested in learning more about careers within construction, please join us for a Work Experience Insight Day webinar – sign up [here](#):



### HOW TO GET IN TOUCH

Should you have any queries or concerns regarding the project, please do not hesitate to get in touch.

**Peter Walsh**  
Community Liaison  
07767 858638  
[birchresources@gmail.com](mailto:birchresources@gmail.com)



**James Wildgoose**  
Senior Project Manager  
07880404204  
[james.wildgoose@skanska.co.uk](mailto:james.wildgoose@skanska.co.uk)



### SITE WORKING HOURS

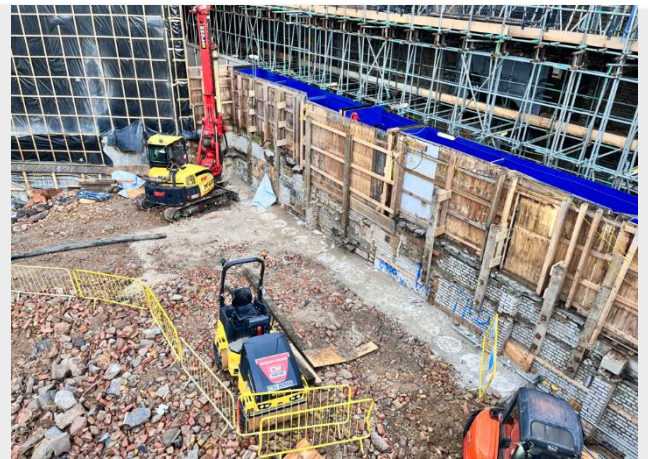
<b>Monday – Friday</b>	08:00 – 18:00
<b>Saturday</b>	08:00 – 18:00
<b>Sunday</b>	No works on site
<b>Bank Holidays</b>	No works on site
<b>Noisy working hours</b>	08:00 – 10:00
<b>Monday – Friday</b>	12:00 – 14:00 16:00 – 18:00

### THANK YOU

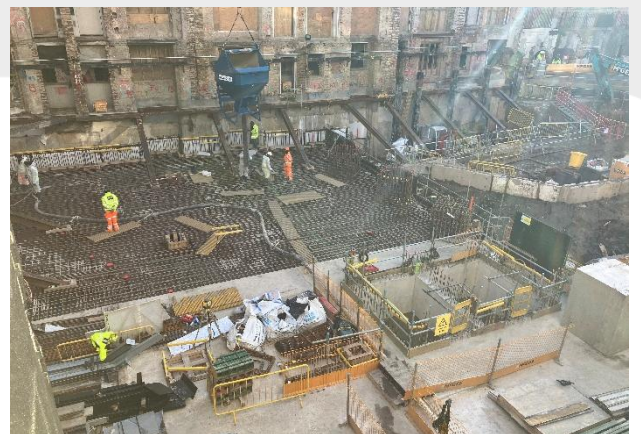
At Skanska, we understand that construction work can be quite disruptive to the local community. We appreciate your patience and understanding, and we will continue to make every effort to minimise any inconvenience to you.



Site Overview including demolition progress



Mini piling to North Block



Concrete and excavation works to the South Block

Dear Neighbours,

Please see the progress Curo have made over January and works we are planning to commence during the month of February.

### Completed works:

- New structural steel picture frame has been installed from the basement up to first floor in the wall connecting buildings 18 and 19.
- New dormers on 15 and 16 have been formed
- Blockwork walls and encasing steels is complete in 15, 16, and 18.
- Structural floor joists strengthening throughout 15 and 16 is complete.
- Brickwork repairs in the basement of 17.
- New roof frames on 15 and 16.
- New lead gutters installed on 15 and 16 roofs.
- Drainage in basement of 20 is nearing completion.



**New roof gutters with strengthened roofs  
With the reinstatement of heritage roof tiles**

### Ongoing works:

- Waterproofing basements 15 and 16.
- Brickwork repairs in basements 19, 20, 21 and 22.
- Drainage works in basements 21 and 22.
- Demolition works in 10.
- Brickwork repairs to external facades on SMS 15 to 18.
- Floor joist strengthening works in 17.
- New gutters on roof of 18 being formed.

### Forthcoming works:

- Drylining to commence in 15, 16 and 17
- Waterproofing to commence in 17.
- Window repairs in 20.
- Fireproofing ceilings in 15, 16 and 17.



**Waterproofing Basement of 15 and 16 progressing**

### Scaffolding works

External Scaffolding work is nearing completion! With the last phase of external scaffolding being erected on 42 SMS in Early February.

### Demolition in 10 SMS

During February demolition works will continue in 10 SMS. As a result of this we are expecting noise levels from the work to continue, we will be working within our noisy hours 8-10am, 12-2pm, and 4-6pm Monday to Friday.



**New structural steel picture frame  
installed in 18 and 19**

### Sustainability

So far on the project we have had 201 waste collections in total, weighing up to 1,342 tons in total from this we have a 99.80% diversion from landfill rate.



## Site Contacts

If you have any questions or complaints, please do not hesitate to contact us:

**Joe Whyte**

Senior Site Manager

e: [JoeWhyte@curoconstruction.com](mailto:JoeWhyte@curoconstruction.com)

**Connor Lancaster:**

Site Manager

e: [connorlancaster@curoconstruction.com](mailto:connorlancaster@curoconstruction.com)

## Sign up to the mailing list:

These newsletters and other project updates are also sent digitally to the South Molton mailing list.

Sign up at [bit.ly/SMTmailinglist](https://bit.ly/SMTmailinglist) or by scanning the QR code below:



## Considerate Constructors Scheme

Curo Construction is registered with the Considerate Constructors Scheme (CCS). This is a nationwide scheme design to ensure we follow a neighbourly code of conduct.

More details can be found at:

[www.ccscheme.org.uk](http://www.ccscheme.org.uk).



## Thank you!

Curo know how their works can interfere with your day-to-day journeys. We would like to thank you all for your understanding so far and moving forward for the duration of the project. We will strive to reduce any disturbance the works may bring to you.

### Site Working Hours:

Monday- Friday, 8am – 6pm

Saturday, 8am – 1pm

### Noisy Working Hours:

8-10am, 12-2pm and 4-6pm daily